

Layers of Learning



Unit 1-13 Printables



Grassland Animals Notebook Pages

Periodic Table of the Elements

Periodic Table of the Elements Colored

Rare Earth Elements Map

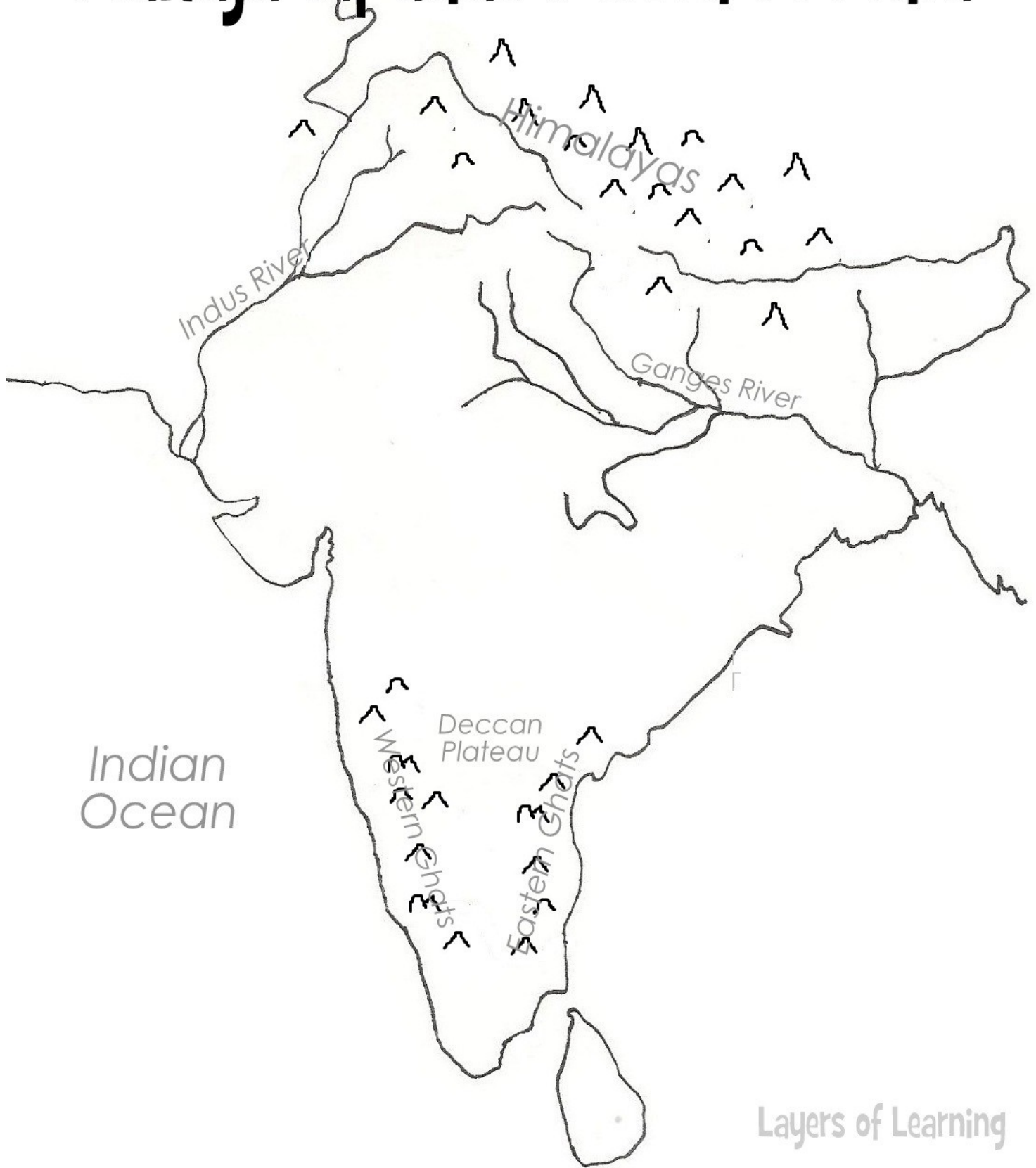
Michelle Copher & Karen Loutzenhiser

Buddha

Buddha means "enlightened one." Though destined to be brought up as a prince, Siddhartha left that life to meditate and discover truth. He sat under a tree for 49 days and then said he reached enlightenment. He then traveled from place to place and taught his beliefs to others. This was the beginning of Buddhism.

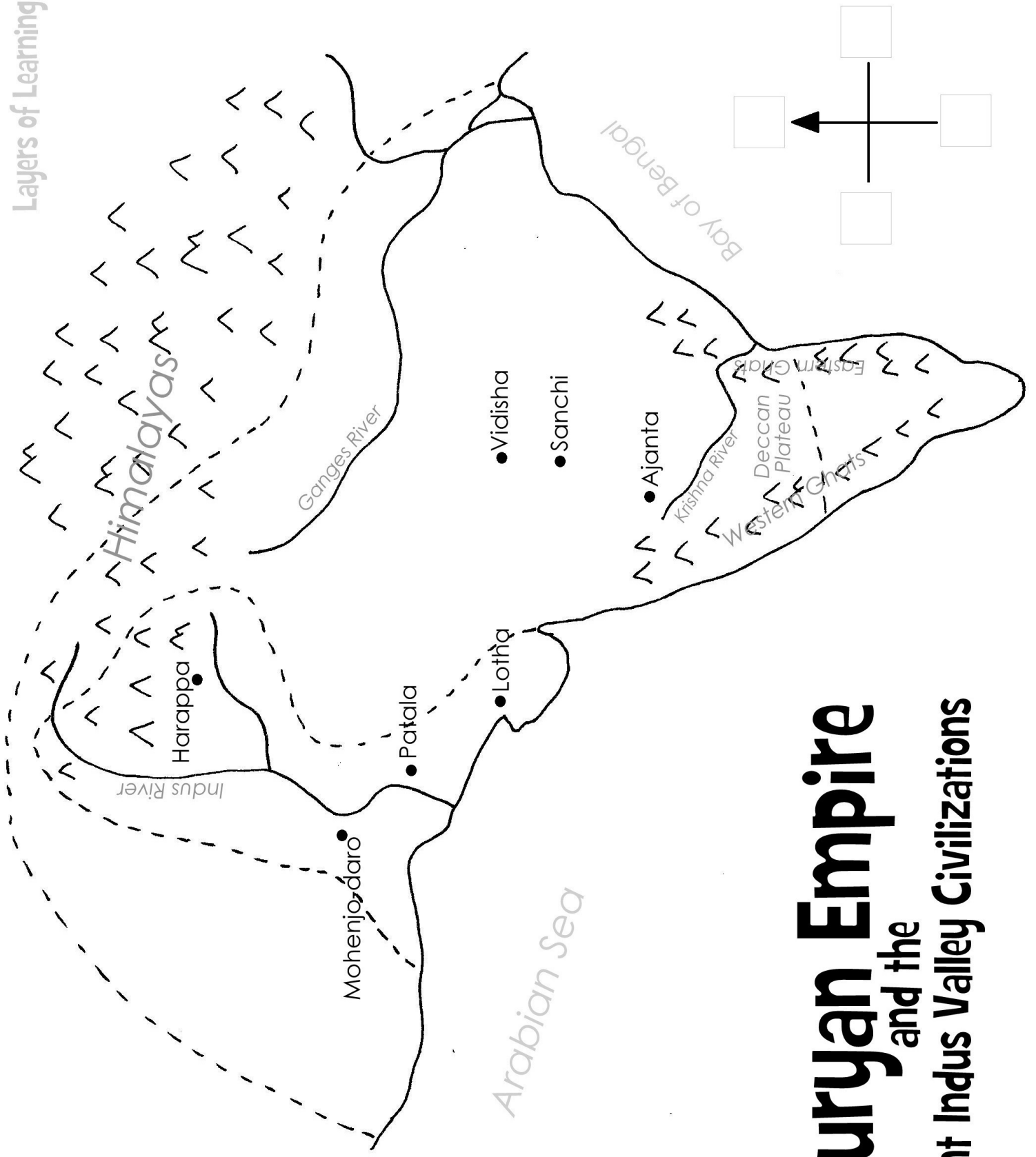


Mahajanapadas Period in India



Layers of Learning

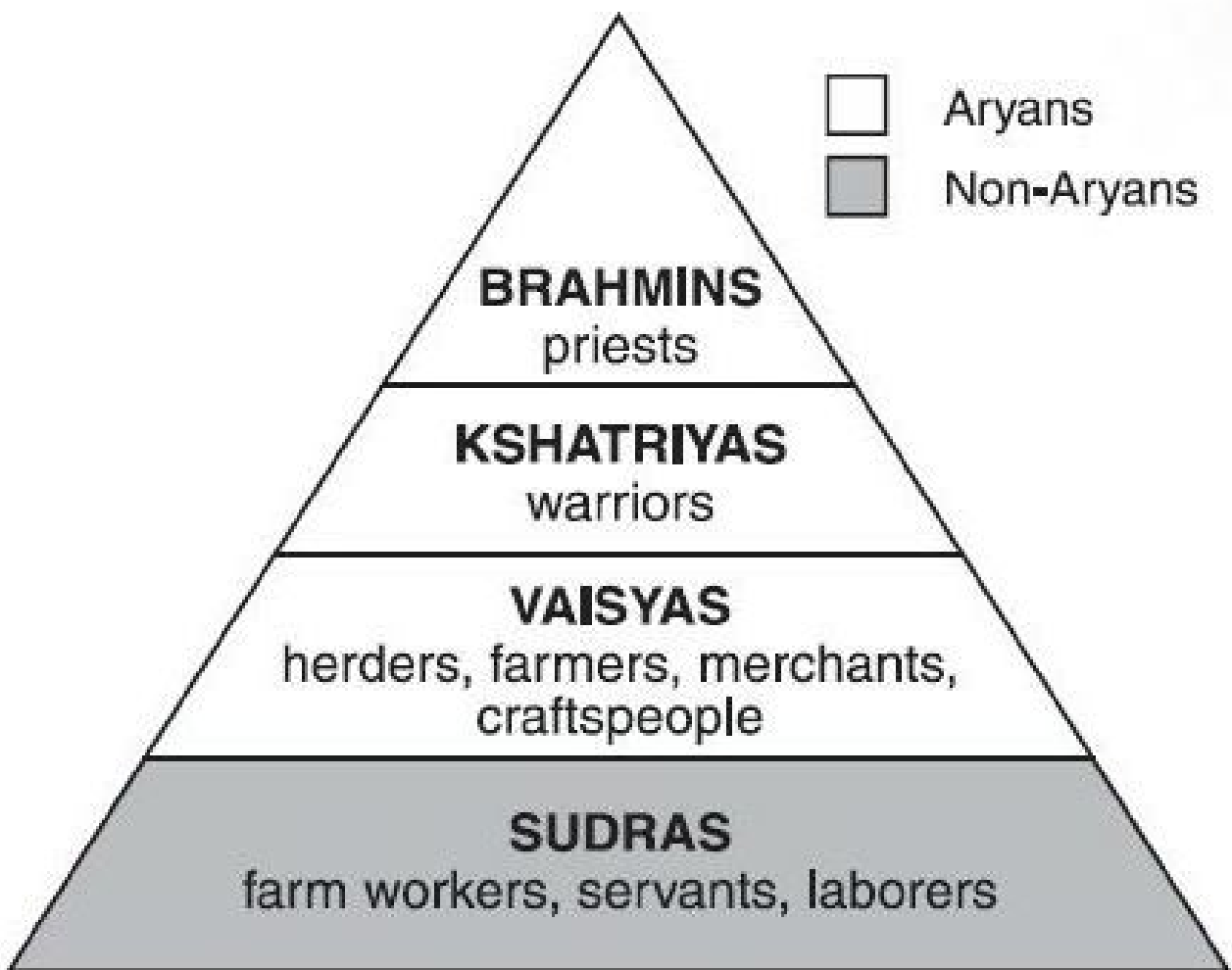
Kuru	Panchala	Koshala	Magadha	Chetiya	Avanti	Ashmaka	Vajji
Surasena	Gandhara	Malla	Kashi	Vamsa	Anga	Matsya	Kamboja



Mauryan Empire and the Ancient Indus Valley Civilizations

Cast Into an Indian Caste

Learn each of the castes and color the pyramid. Outside of the pyramid you can add the pariahs, the untouchable members of society who were considered unclean. You may want to draw a person who belongs in each of the castes.

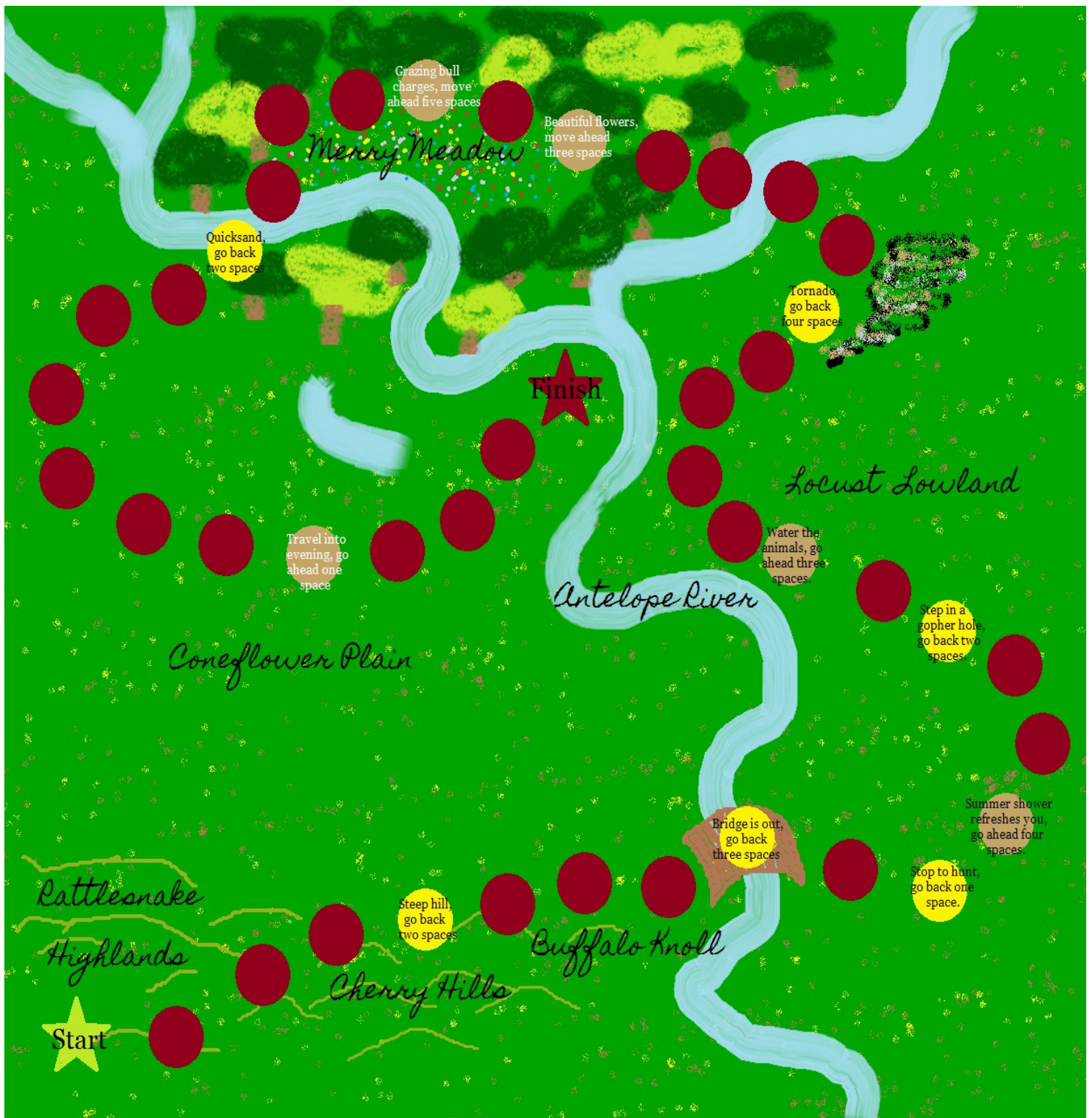


Grasslands of the World



 Grasslands

Layers of Learning



Grassland Game

Take turns rolling a single die. Proceed through the grasslands, but watch out for tornadoes, stampeding bovines, and rough terrain. First one to the finish wins. Use small toys, coins, or buttons for markers.

Insects

There are many kinds of insects that live on the prairie. Locusts are one of the most prevalent. They eat grass and crops and can do lots of damage.



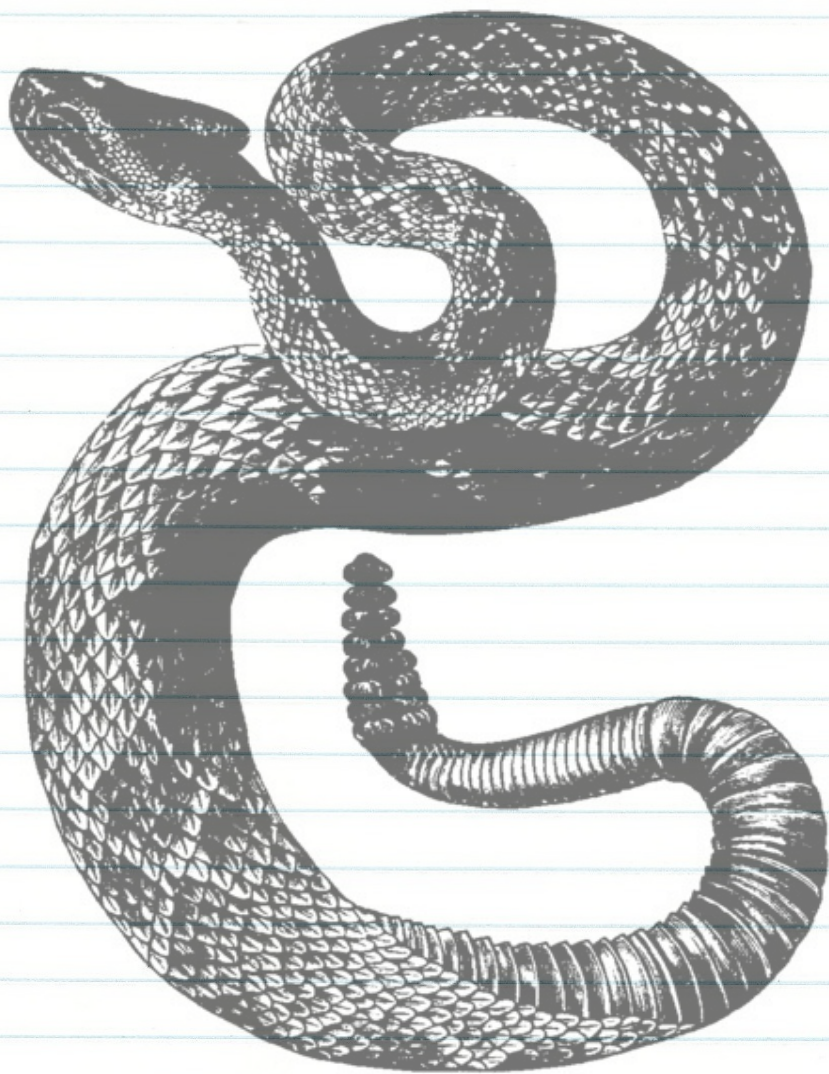
Burrowing

Some animals like the North American Prairie Dog live in underground burrows. This keeps them safe from predators and gives them a home that is cool in the summer and warm in the winter.



Snakes

Rattlesnakes are one type of snake that lives in grasslands. They eat rodents and insects and can be dangerous to cattle and people.



Wildflowers

Wildflowers cover the plains. Echinacea is a purple flower that can be used as medicine also.



Periodic Table of the Elements

1 H Hydrogen 1.0	2 He Helium 4.0																																																																																																																				
3 Li Lithium 6.9	4 Be Beryllium 9.0	5 B Boron 10.8	6 C Carbon 12.0	7 N Nitrogen 14.0	8 O Oxygen 16.0	9 F Fluorine 19.0	10 Ne Neon 20.2	11 Na Sodium 23.0	12 Mg Magnesium 24.3	13 Al Aluminum 27.0	14 Si Silicon 28.1	15 P Phosphorus 31.0	16 S Sulfur 32.1	17 Cl Chlorine 35.5	18 Ar Argon 40.0	19 K Potassium 39.1	20 Ca Calcium 40.1	21 Sc Scandium 45.0	22 Ti Titanium 47.9	23 V Vanadium 50.9	24 Cr Chromium 52.0	25 Mn Manganese 54.9	26 Fe Iron 55.9	27 Co Cobalt 58.9	28 Ni Nickel 58.7	29 Cu Copper 63.5	30 Zn Zinc 65.4	31 Ga Gallium 69.7	32 Ge Germanium 72.6	33 As Arsenic 74.9	34 Se Selenium 79.0	35 Br Bromine 79.9	36 Kr Krypton 83.8	37 Rb Rubidium 85.5	38 Sr Strontium 87.6	39 Y Yttrium 88.9	40 Zr Zirconium 91.2	41 Nb Niobium 92.9	42 Mo Molybdenum 95.9	43 Tc Technetium 99	44 Ru Ruthenium 101.0	45 Rh Rhodium 102.9	46 Pd Palladium 106.4	47 Ag Silver 107.9	48 Cd Cadmium 112.4	49 In Indium 114.8	50 Sn Tin 118.7	51 Sb Antimony 121.8	52 Te Tellurium 127.6	53 I Iodine 126.9	54 Xe Xenon 131.3	55 Cs Cesium 132.9	56 Ba Barium 137.3	Lanthanides 57-71	57 La Lanthanum 138.9	58 Ce Cerium 140.1	59 Pr Praseodymium 140.9	60 Nd Neodymium 144.2	61 Pm Promethium 145	62 Sm Samarium 150.4	63 Eu Europium 152.0	64 Gd Gadolinium 157.3	65 Tb Terbium 158.9	66 Dy Dysprosium 162.5	67 Ho Holmium 164.0	68 Er Erbium 167.3	69 Tm Thulium 168.9	70 Yb Ytterbium 173.0	71 Lu Lutetium 175.0	72 Hf Hafnium 178.5	73 Ta Tantalum 180.9	74 W Tungsten 183.9	75 Re Rhenium 186.2	76 Os Osmium 190.2	77 Ir Iridium 192.2	78 Pt Platinum 195.1	79 Au Gold 197.0	80 Hg Mercury 200.6	81 Tl Thallium 204.4	82 Pb Lead 207.2	83 Bi Bismuth 209.0	84 Po Polonium 210.0	85 At Astatine 211	86 Rn Radon 222.0	87 Fr Francium 223.0	88 Ra Radium 226.0	Actinides 89-103	89 Ac Actinium 227.0	90 Th Thorium 232.0	91 Pa Protactinium 231.0	92 U Uranium 238.0	93 Np Neptunium 237	94 Pu Plutonium 242	95 Am Americium 243	96 Cm Curium 247	97 Bk Berkelium 247	98 Cf Californium 251	99 Es Einsteinium 254	100 Fm Fermium 253	101 Md Mendelevium 256	102 No Nobelium 254	103 Lr Lawrencium 257	104 Rf Rutherfordium 267	105 Db Dubnium 268	106 Sg Seaborgium 271	107 Bh Bohrium 272	108 Hs Hassium 270	109 Mt Meitnerium 276	110 Ds Darmstadtium 281	111 Rg Roentgenium 280	112 Cn Copernicium 285	113 Nh Nihonium 284	114 Fl Flerovium 289	115 Uup Ununpentium 288	116 Lv Livermorium 293	117 Uus Ununseptium 294	118 Uuo Ununoctium 294

57 La Lanthanum 138.9	58 Ce Cerium 140.1	59 Pr Praseodymium 140.9	60 Nd Neodymium 144.2	61 Pm Promethium 145	62 Sm Samarium 150.4	63 Eu Europium 152.0	64 Gd Gadolinium 157.3	65 Tb Terbium 158.9	66 Dy Dysprosium 162.5	67 Ho Holmium 164.0	68 Er Erbium 167.3	69 Tm Thulium 168.9	70 Yb Ytterbium 173.0	71 Lu Lutetium 175.0	89 Ac Actinium 227.0	90 Th Thorium 232.0	91 Pa Protactinium 231.0	92 U Uranium 238.0	93 Np Neptunium 237	94 Pu Plutonium 242	95 Am Americium 243	96 Cm Curium 247	97 Bk Berkelium 247	98 Cf Californium 251	99 Es Einsteinium 254	100 Fm Fermium 253	101 Md Mendelevium 256	102 No Nobelium 254	103 Lr Lawrencium 257
--------------------------------	-----------------------------	-----------------------------------	--------------------------------	-------------------------------	-------------------------------	-------------------------------	---------------------------------	------------------------------	---------------------------------	------------------------------	-----------------------------	------------------------------	--------------------------------	-------------------------------	-------------------------------	------------------------------	-----------------------------------	-----------------------------	------------------------------	------------------------------	------------------------------	---------------------------	------------------------------	--------------------------------	--------------------------------	-----------------------------	---------------------------------	------------------------------	--------------------------------

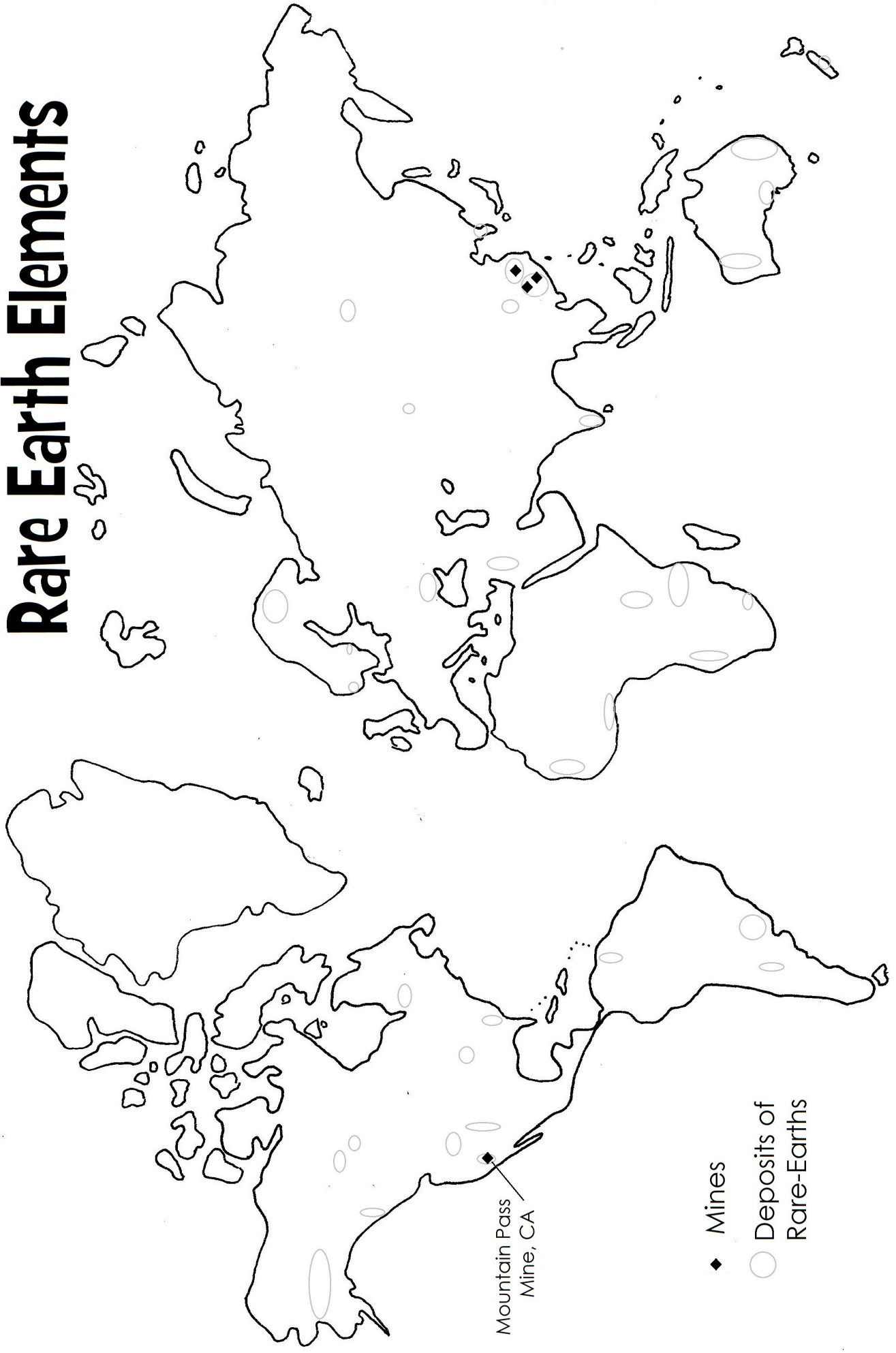
Periodic Table of the Elements

1 H Hydrogen 1.0	2 He Helium 4.0																									
3 Li Lithium 6.9	4 Be Beryllium 9.0											5 B Boron 10.8	6 C Carbon 12.0	7 N Nitrogen 14.0	8 O Oxygen 16.0	9 F Fluorine 19.0	10 Ne Neon 20.2									
11 Na Sodium 23.0	12 Mg Magnesium 24.3											13 Al Aluminum 27.0	14 Si Silicon 28.1	15 P Phosphorus 31.0	16 S Sulfur 32.1	17 Cl Chlorine 35.5	18 Ar Argon 40.0									
19 K Potassium 39.1	20 Ca Calcium 40.1	21 Sc Scandium 45.0	22 Ti Titanium 47.9	23 V Vanadium 50.9	24 Cr Chromium 52.0	25 Mn Manganese 54.9	26 Fe Iron 55.9	27 Co Cobalt 58.9	28 Ni Nickel 58.7	29 Cu Copper 63.5	30 Zn Zinc 65.4	31 Ga Gallium 69.7	32 Ge Germanium 72.6	33 As Arsenic 74.9	34 Se Selenium 79.0	35 Br Bromine 79.9	36 Kr Krypton 83.8									
37 Rb Rubidium 85.5	38 Sr Strontium 87.6	39 Y Yttrium 88.9	40 Zr Zirconium 91.2	41 Nb Niobium 92.9	42 Mo Molybdenum 95.9	43 Tc Technetium 99	44 Ru Ruthenium 101.0	45 Rh Rhodium 102.9	46 Pd Palladium 106.4	47 Ag Silver 107.9	48 Cd Cadmium 112.4	49 In Indium 114.8	50 Sn Tin 118.7	51 Sb Antimony 121.8	52 Te Tellurium 127.6	53 I Iodine 126.9	54 Xe Xenon 131.3									
55 Cs Cesium 132.9	56 Ba Barium 137.3	Lanthanides 57-71										81 Tl Thallium 204.4	82 Pb Lead 207.2	83 Bi Bismuth 209.0	84 Po Polonium 210.0	85 At Astatine 211	86 Rn Radon 222.0									
87 Fr Francium 223.0	88 Ra Radium 226.0	Actinides 89-103										104 Rf Rutherfordium 267	105 Db Dubnium 268	106 Sg Seaborgium 271	107 Bh Bohrium 272	108 Hs Hassium 270	109 Mt Meitnerium 276	110 Ds Darmstadtium 281	111 Rg Roentgenium 280	112 Cn Copernicium 285	113 Nh Nihonium 284	114 Fl Flerovium 289	115 Uup Ununpentium 288	116 Lv Livermorium 293	117 Uus Ununseptium 294	118 Uuo Ununoctium 294

	Alkali Metals		Lanthanides		Semi-metals
	Alkali-Earth Metals		Actinides		Non-metals
	Transition Metals		Poor Metals		Noble Gases

57 La Lanthanum 138.9	58 Ce Cerium 140.1	59 Pr Praseodymium 140.9	60 Nd Neodymium 144.2	61 Pm Promethium 145	62 Sm Samarium 150.4	63 Eu Europium 152.0	64 Gd Gadolinium 157.3	65 Tb Terbium 158.9	66 Dy Dysprosium 162.5	67 Ho Holmium 164.0	68 Er Erbium 167.3	69 Tm Thulium 168.9	70 Yb Ytterbium 173.0	71 Lu Lutetium 175.0
89 Ac Actinium 227.0	90 Th Thorium 232.0	91 Pa Protactinium 231.0	92 U Uranium 238.0	93 Np Neptunium 237	94 Pu Plutonium 242	95 Am Americium 243	96 Cm Curium 247	97 Bk Berkelium 247	98 Cf Californium 251	99 Es Einsteinium 254	100 Fm Fermium 253	101 Md Mendelevium 256	102 No Nobelium 254	103 Lr Lawrencium 257

Rare Earth Elements



Mountain Pass Mine, CA

- ◆ Mines
- Deposits of Rare-Earths